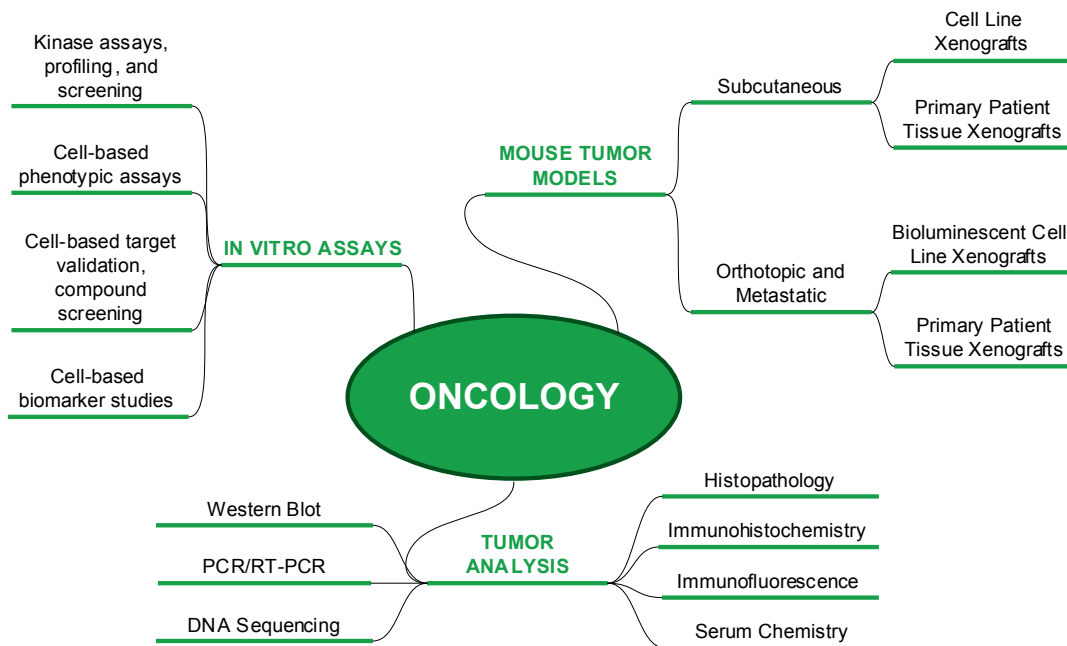


Oncology Services

WuXi AppTec is a global leader in providing discovery, testing and manufacturing services for the pharmaceutical, biotechnology and medical device industries. Research-driven and customer-focused, with operations in China and the U.S., WuXi AppTec offers a broad and integrated portfolio of services designed to assist our customers with cost-effective and efficient outsourcing solutions.

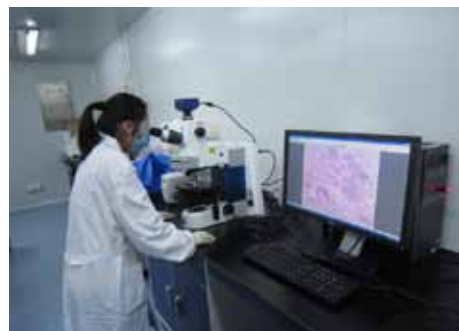
WX
LISTED
NYSE



In Vitro Assay Capabilities:

Proven record of success in providing our customers in stand-alone and integrated in vitro services in oncology

- Kinase assay, profiling and screening
 - All major kinase assay platforms
 - Kinase selectivity panel (60+ kinases and expanding)
 - Kinase mechanism of action studies
 - HTS screening capabilities
- Cell based phenotypic assays
 - Cell panel screening (150+ cell lines)
 - Viability and proliferation assays (MTS, CellTiter-Glo, Alamar Blue, BrdU ELISA)
 - Apoptosis assays: Apo-one, cell death ELISA
- Other validated assays
 - Cell cycle assay
 - Transformation/soft agar assays
- Cell motility and invasion assays
- Angiogenesis assays
- Biomarker common platform
 - Cell analysis: FACS, Acumen
 - Protein level (WB, multiplex ELISA, immunohistochemistry)
 - DNA levels (DNA sequencing, genotyping)
 - RNA levels (qPCR, RT-PCR)



For more information on WuXi AppTec's services please contact:

U.S.
+1 (651) 675 2000 • +1 (888) 794 0077
info@wuxiapptec.com

China
+86 (21) 5046 2477
customer_service@wuxiapptec.com

www.wuxiapptec.com

Industry Standard In Vivo Models:

An extensive list of industry standard mouse models is available and our staff provides high quality scientific and technical service with high customer satisfaction.

Subcutaneous cell line xenograft models -over 80 models covering 20 cancer types established and many validated with reference compounds:

Cancer Type (number of models)	
Bladder (3)	Liver (3)
Brain (1)	Lung (15)
Breast (7)	Mastocytoma (1)
Cervical (1)	Melanoma (4)
Colorectal (12)	Ovary (4)
Duodenal (1)	Pancreas (4)
Esophagus (1)	Prostate (2)
Gastric (2)	Renal (4)
Head & Neck (1)	Sarcoma (5)
Hematopoietic (12)	Skin (1)

Imaging-based orthotopic and metastatic models – over 20 bioluminescent cell lines covering 14 cancer types established; custom-tagging of cell lines available;

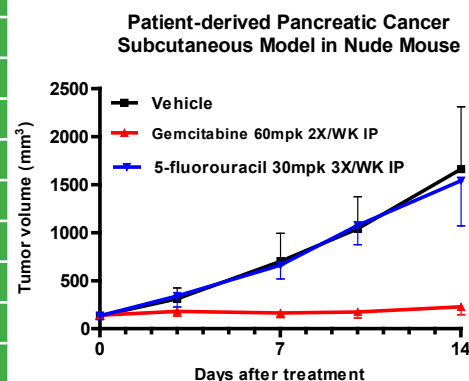
A state-of-the-art imaging system provides the capability to develop orthotopic and metastatic cancer models using bioluminescent cell lines. Cancer growth can be monitored in real time in mice.

Cancer Type (number of models)	
Brain (1)	Lung (2)
Breast (3)	Lymphoma (1)
Colorectal (3)	Melanoma (1)
Duodenal (1)	Ovarian (1)
Gastric (1)	Pancreas (1)
Leukemia (2)	Prostate (2)
Liver (2)	Renal (1)
	Sarcoma (1)

Patient-derived tumor xenograft models:

Fresh patient cancer samples are obtained and implanted subcutaneous or orthotopically into nude mice. Over 290 subcutaneous and 5 orthotopic PDX models have been established. Sequencing and expression profiling are available from selected models.

Cancer type	Model established	Expression profiling	Exome sequencing (100X)
Lung (primary)	105	22	30
Stomach (gastric cardia)	23	8	17
Stomach (gastric)	3		
Liver (primary)	69		21
Colorectal (primary)	23		13
Colorectal (lung met)	2		
Esophagus	50	12	18
Pancreas	4		4
Uterus (lung met, endometrial)	2		
Kidney	2		
Cholangiocarcinoma	2		
Liposarcoma	1		1
Total	286	42	104



Translational research services:

- > Target validation with constitutive and inducible shRNA knockdown in cell culture and in xenograft
- > Tissue bank
- > Cancer stem cell platform
- > Tumor analysis (IHC, histology, qPCR, MSD, Western, etc)

For further information, please contact: oncology@wuxiapptec.com; +86-21-5046-1489

For more information on WuXi AppTec's services please contact:

U.S.
+1 (651) 675 2000 • +1 (888) 794 0077
info@wuxiapptec.com

China
+86 (21) 5046 2477
customer_service@wuxiapptec.com

www.wuxiapptec.com

DS-009-03.16.12