

Pharmacology Services

Pharmacology at WuXi AppTec offers extensive *in vivo* models in many therapeutic areas to provide high quality services to support drug development including *in vivo* proof of concept, efficacy screening, target validation, target engagement and mechanism of action studies.

WuXi AppTec is a global leader in providing discovery, testing and manufacturing services for the pharmaceutical, biotechnology and medical device industries. Research-driven and customer-focused, with operations in China and the U.S., WuXi AppTec offers a broad and integrated portfolio of services designed to assist our customers with cost-effective and efficient outsourcing solutions.



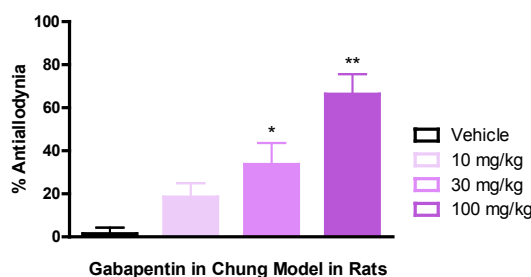
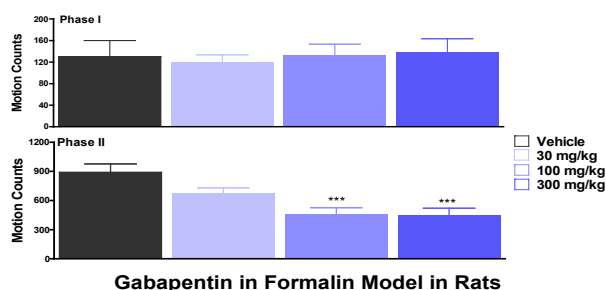
People: Pharmacology is led by returnees with many years of Western pharmaceutical experience, involving in drug development taking chemical entities from basic research to regulatory approval of current medications. Together with domestic trained talents, our teams have a record of providing excellent services to our customers.

Facility: A world class 30,000 ft² pharmacology facility in the Shanghai site has been completed in June 2010, including barrier

facility for oncology studies and Biosafety Level-2 laboratories for infectious disease projects.

WX
LISTED
NYSE

Therapeutic Areas: Centers of Excellence are established in the area of pain, inflammation, diabetes and obesity. Experienced leaders in oncology, infectious diseases and neuroscience provide services and input in their specialized areas. Pharmacology aims to provide efficient, cost-effective and value-added services and will expand to additional areas in the future.



Pain and Inflammation Models

- **Acute inflammatory pain**
 - Formalin paw
 - Carrageenan paw
- **Chronic inflammatory pain**
 - Freund's complete adjuvant
- **Acute nociception**
 - Tail flick
 - Hot plate
- **Neuropathic pain**
 - Chung model
 - Bennett model
 - Seltzer model
 - Chemotherapy agent-induced pain
- **Visceral pain**
 - Acetic acid writhing

- **Inflammation**
 - Carrageenan/CFA paw edema
 - Adjuvant-induced arthritis
 - Mono-iodoacetate arthritis

Diabetes and Obesity Models

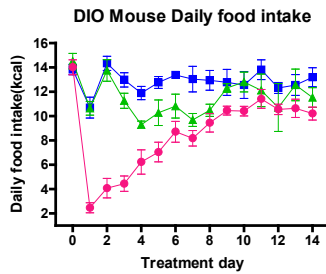
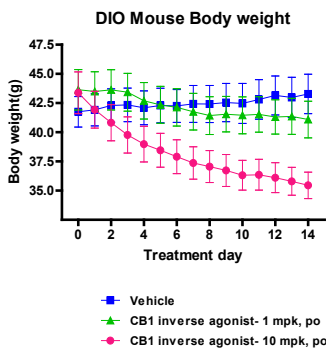
- **Obesity**
 - Diet-induced obese mouse
- **Diabetes**
 - Streptozotocin-induced diabetes
 - Type 2 diabetes
 - GK rat
 - db/db and ob/ob mouse

For more information on WuXi AppTec's services please contact:

U.S.
+1 (651) 675 2000 • +1 (888) 794 0077
info@wuxiapptec.com

China
+86 (21) 5046 2477
customer_service@wuxiapptec.com

www.wuxiapptec.com



- Mouse/rat oral glucose tolerance test with concurrent insulin measurement
- Mouse/rat insulin tolerance test
- Rat glucagon challenge

Oncology Xenograft Models

Over 30 cancer cell lines covering most cancer types have been validated for tumor growth and compound effects in athymic mice

- > Lung: A549, H460, H69, NCI-H292, NCI-H322
- > Colorectal: HT29, Colo205, HT29, HCT-116, SW620, DLD-1
- > Brain (GBM): U87
- > Breast: MDA-MB-231, MDA-MB-435S, MCF-7
- > Liver: Hep G2
- > Pancreas: Mia-pa-ca-2, Bx-PC3, PANC-1
- > Bladder: T24/83
- > Head and Neck: Cal27, A673
- > Hematopoietic: MV4-11, K562, MOLT-4, KG-1
- > Prostate: PC3
- > Melanoma: A375
- > Ovarian: A2780, SK-OV-3
- > Sarcoma: A673, HT108

More than 80 additional cancer cell lines available to be used in the xenograft models

Cardiovascular Disease Models

- > Telemetrized SHR (spontaneously hypertensive rats)
- > Diuresis
- > Acute heart failure
- > Anesthetized dog for acute cardiovascular toxicity

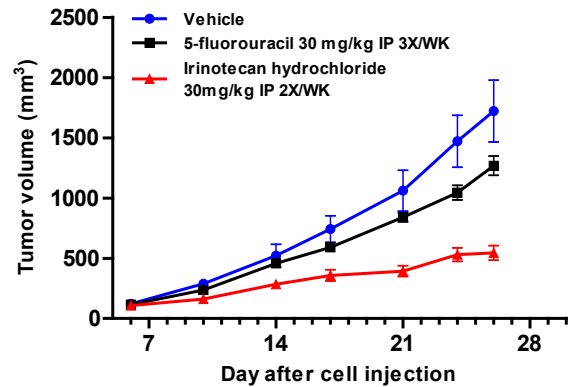
CNS Models

- > Irwin test
- > FOB (functional observational battery)
- > Neurology models
- > Psychiatry models

Custom Built Models

Pharmacology also provides service to custom build models in consultation with our customers

HT29 Colorectal Cancer Xenograft



For more information on WuXi AppTec's services please contact:

U.S.
+1 (651) 675 2000 • +1 (888) 794 0077
info@wuxiapptec.com

China
+86 (21) 5046 2477
customer_service@wuxiapptec.com

www.wuxiapptec.com